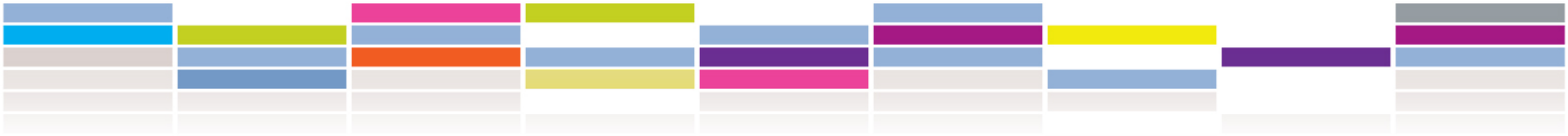


SSHRC  CRSH



# Connection Grants - Research Data Management Capacity Building Initiative

January 8, 2019

# Connection Grants: Research Data Management Capacity Building Initiative

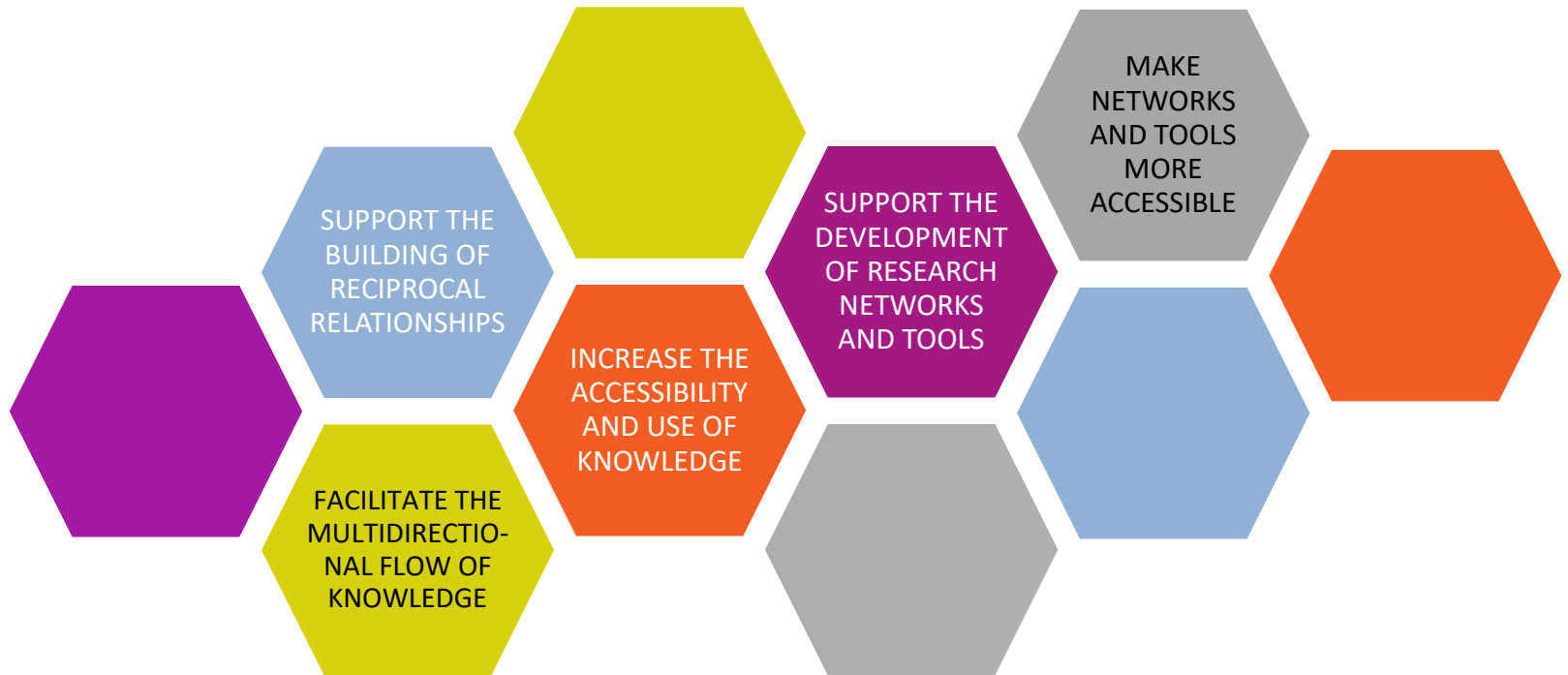
Objective: support the research community's development, adoption and dissemination of research data management standards, practices, tools and skills appropriate to their field.

# Connection Grants: Research Data Management Capacity Building Initiative

As part of its assessment of the proposal's relevance to the [objectives of the Connection program](#), under the Connection Grants [Challenge criteria](#), the merit review committee will evaluate the degree to which applications respond to one or more of the following objectives:

- develop and/or adopt data management standards, practices, tools and skills within and across disciplines and institutions, with a focus on the social sciences and humanities;
- connect researchers or students with data management professionals and service providers (e.g., librarians, programmers, specialists in research ethics, etc.), and other stakeholders (e.g., research subjects and users) to increase knowledge of data management;
- share and develop knowledge and skills relating to data collection and storage, metadata, preservation, retention, sharing, credit and citation;
- share and develop knowledge and skills related to the responsible ownership, control, access and possession of data used or created in the context of [Indigenous research](#) (e.g., the application of [OCAP](#)<sup>®</sup> principles); and
- through other activities, enable the social sciences and humanities research community to strengthen its ability to fulfill the roles and responsibilities indicated in the [Tri-Agency Statement of Principles on Digital Data Management](#), and the requirements proposed in the draft [tri-agency research data management policy](#).

# Objectives of the Connection Program



# Connection Grants

Support short term  
KM initiatives –  
maximum one year

Two Streams:  
Events and  
Outreach Activities

Engage with social  
sciences and  
humanities issues



# Events and Outreach Activities



**EVENTS:**  
\$7,000 to  
\$25,000

Short term activity  
Completed within a week  
Follow-up activities

Longer in duration  
Engage larger public  
Speaker series, travelling  
exhibition, podcast, etc.

**OUTREACH  
ACTIVITIES:**  
\$7,000 to  
\$50,000+



# Matching Funds

Eligibility requirement: 50% matching funds



Budget requested from SSHRC:  
e.g. \$10,000



Mandatory matching funds:  
\$5,000

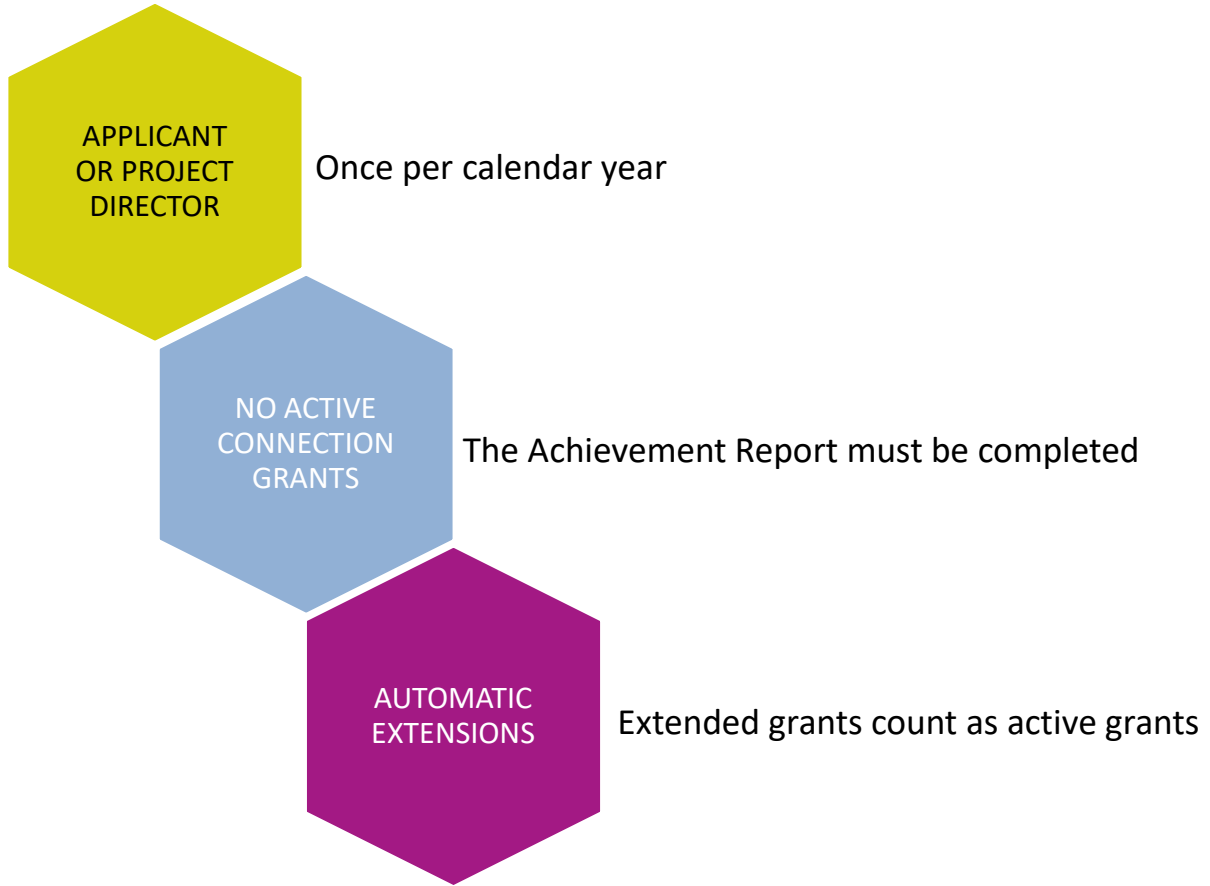


# Two Ways to Apply





# Multiple Applications Regulations



# Adjudication Process

FOUR ADJUDICATION COMMITTEES

MARCH

JUNE

SEPTEMBER

DECEMBER

CHALLENGE

40%

FEASIBILITY

30%

CAPABILITY

30%



# Indigenous Research

In May 2015, SSHRC launched new initiatives to support and promote Indigenous research and talent development.

Indigenous research [statement of principles](#) will serve to guide the implementation of SSHRC's current and future activities.

A revised definition of [Indigenous research](#) clarifies research “by and with” Indigenous Peoples and emphasizes and values the existing strengths, assets and knowledge systems of Indigenous Peoples and communities.

[Guidelines for the Merit Review of Indigenous Research](#) are intended to assist committee members in interpreting SSHRC's specific Challenge, Feasibility and Capability evaluation criteria in the context of Indigenous research.

# Your questions

**Contact information:**

**Program Support:** [connection@sshrc-crsh.gc.ca](mailto:connection@sshrc-crsh.gc.ca)

**Technical Support:** [webgrant@sshrc-crsh.gc.ca](mailto:webgrant@sshrc-crsh.gc.ca)



# Thank you!

[www.sshrc-crsh.gc.ca](http://www.sshrc-crsh.gc.ca)



Social Sciences and Humanities  
Research Council of Canada

Conseil de recherches en  
sciences humaines du Canada

Canada