



Digital Research
Alliance of Canada



Sovereign
AI Compute
Infrastructure



Canadian Sovereign AI Compute Infrastructure Townhall Update

August 7, 2025



In Collaboration.



Our Vision for Public Sovereign and Secure AI Compute Infrastructure.

We will support Canada's position as a global leader in AI, support and protect Canadian research and enable scientific and industrial breakthroughs.

Defining Sovereign Compute in Canada.

- Ability to maintain full control of Canada's AI infrastructure, data and technological capabilities.
- Ensure AI development serves national interest without external dependencies or influence and follows these guiding principles:



Robust legal framework and operational safeguards



Reduced reliance on foreign entities controlling AI compute services



Strengthened Canadian innovation ecosystem, prioritizing made-in-Canada solutions



Canadian talent development

Our Proposed Approach.



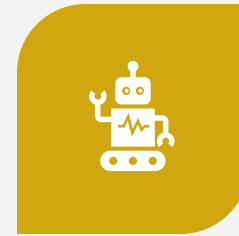
AI Compute &
Canada's First
AI Factory



National Data
Platform And
Unified AI
Foundational
Infrastructure



AI
Infrastructure
Testbed &
Integrated
Marketplace





AI Workforce
Development,
Researcher
Upskilling



Economic
Security &
Investment
Attraction

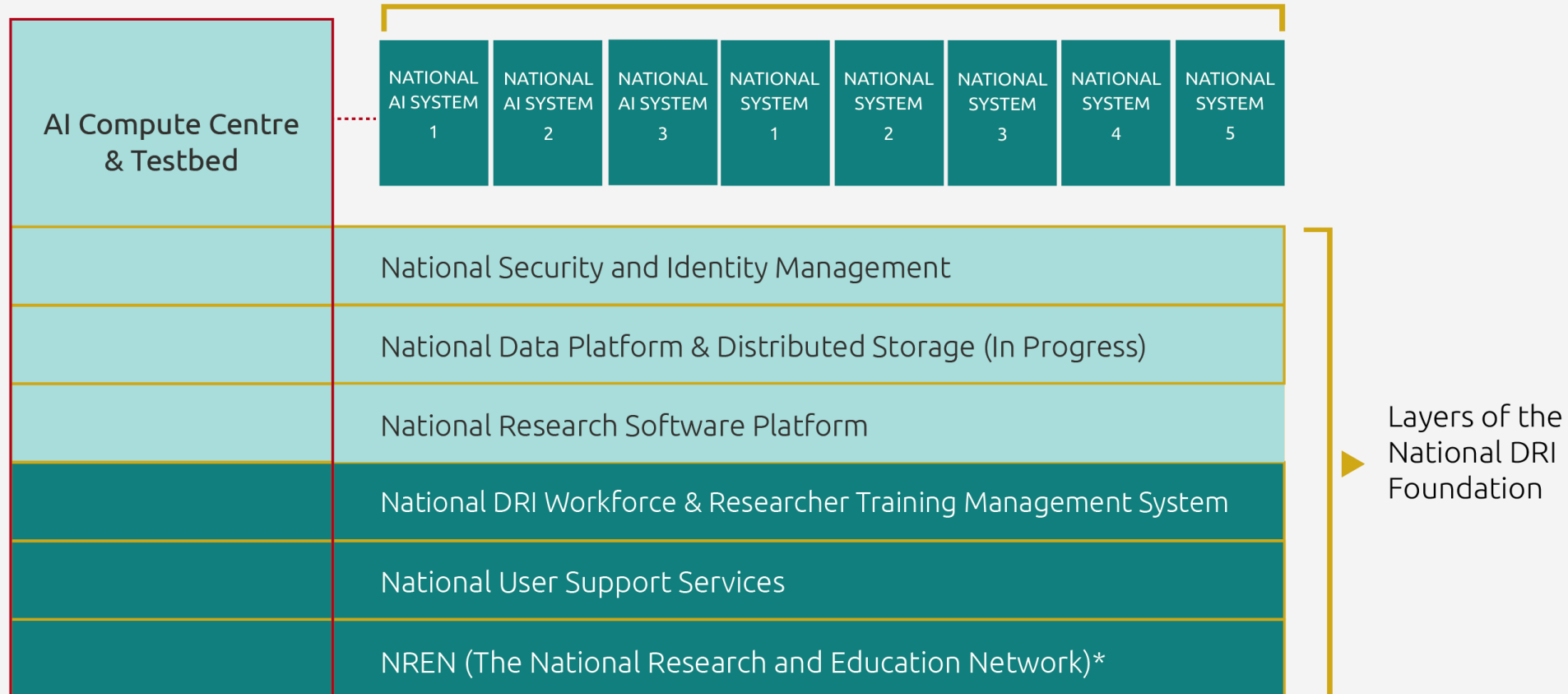
Canada's AI Factory.

 \$705M Investment
 Exists Today



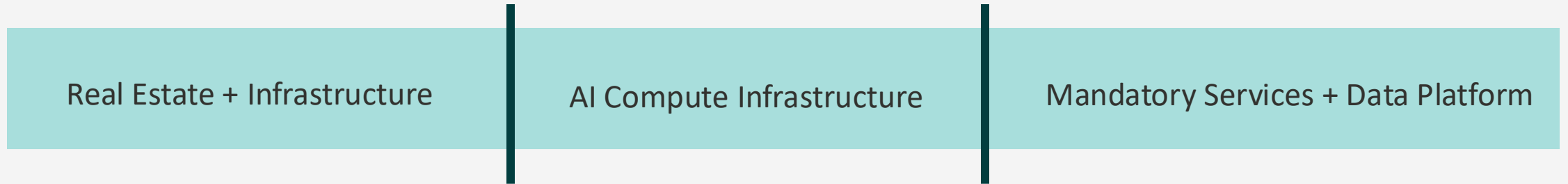
Canada's First
AI Factory

National Compute System

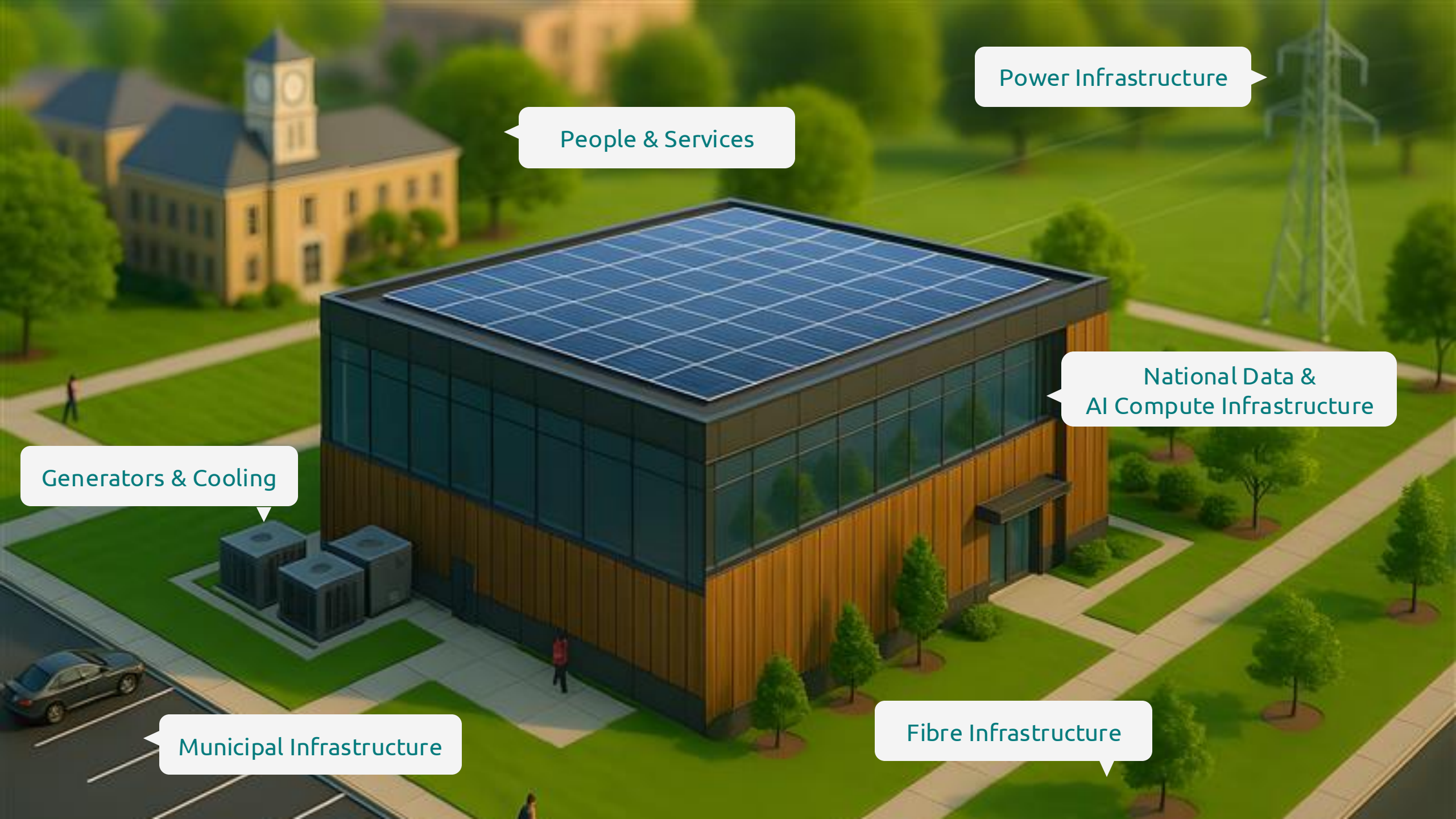


* Managed by CANARIE

Optimizing the \$705M.



- The Alliance is the only national provider for critical services (identity management, data cybersecurity, training) to Canadian research users.
- Investment portfolio needs to account for all 3 components. SOI submissions likely only account for 1 or 2 components.



Power Infrastructure

People & Services

National Data &
AI Compute Infrastructure

Generators & Cooling

Municipal Infrastructure

Fibre Infrastructure

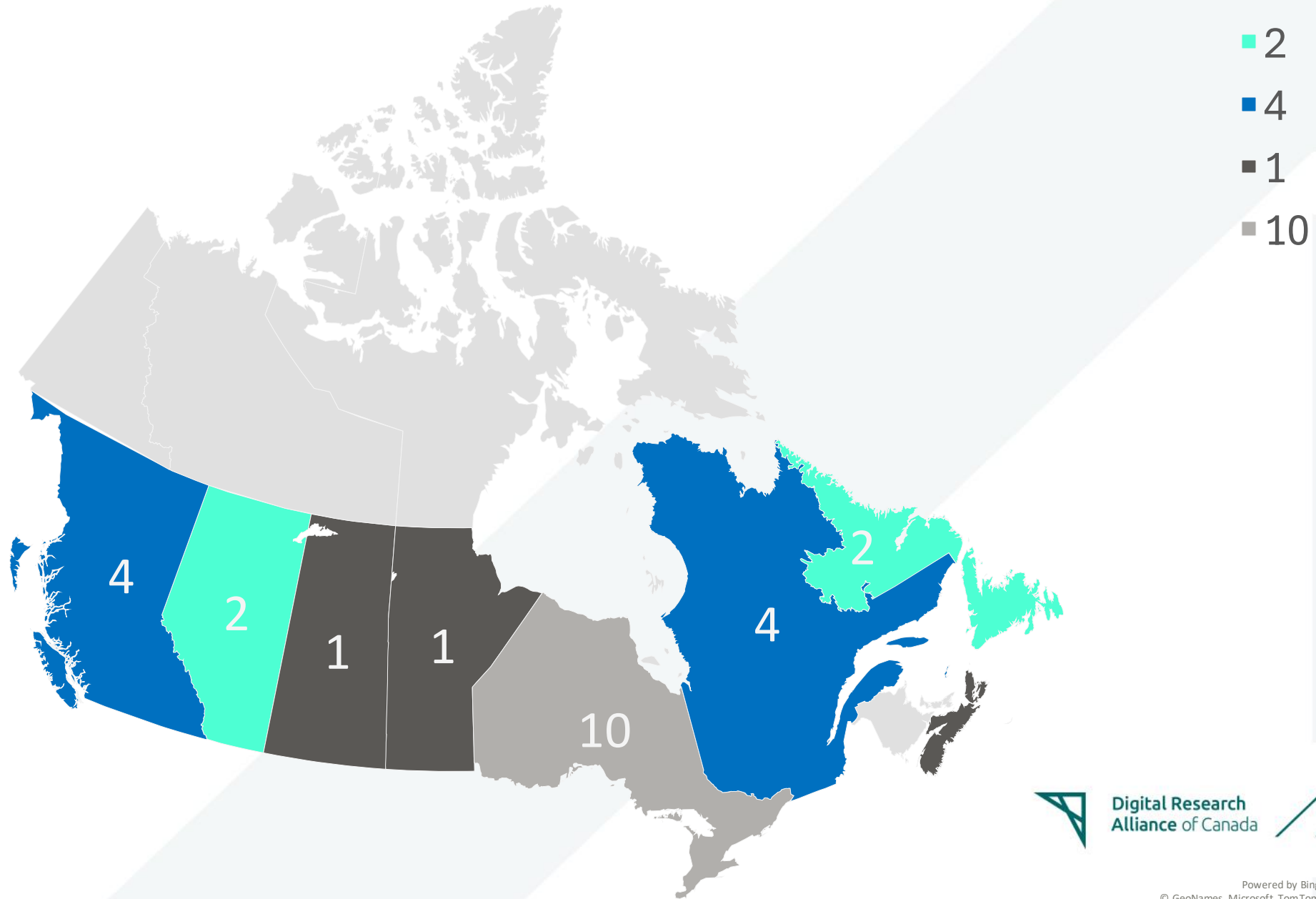
Sovereign and Public Ownership Models.

- The AI SCIP has the potential to unlock a generational investment opportunity for Canadian research and innovation.
- Must account for near-term AI compute needs but also prepare for the future.
- Present a fiscally responsible long-term ownership/ operating plan to government.

Prospective Real Estate Partner	Ideal Scenario
Public Sector <ul style="list-style-type: none">• Public post-secondary - Preferably with real estate development capabilities• Provincial & Municipal Governments - Identified sites with developers able to provide turnkey solutions.	Priority 1: Building retrofit for sale/lease Priority 2: Turnkey building and land sale Priority 3: Turnkey building and LT land lease Priority 4: Build to suit on LT land lease
Private Sector <ul style="list-style-type: none">• Real estate landowner / developer	Priority 1: Retrofit and sale of building and land Priority 2: Turnkey sale of new building and land

Immediate legal ability to enter a real estates sales or 99-year long-term lease (public sector) is mandatory

Site Opportunity Scan Map



Digital Research
Alliance of Canada



Sovereign
AI Compute
Infrastructure

Post Aug. 15 Assessment Process.



Aug. 15 – Close of Site Opportunity Scan



Review and 1st shortlist of submissions



Third-party technical review



Request for further information (zoning, permitting, power)

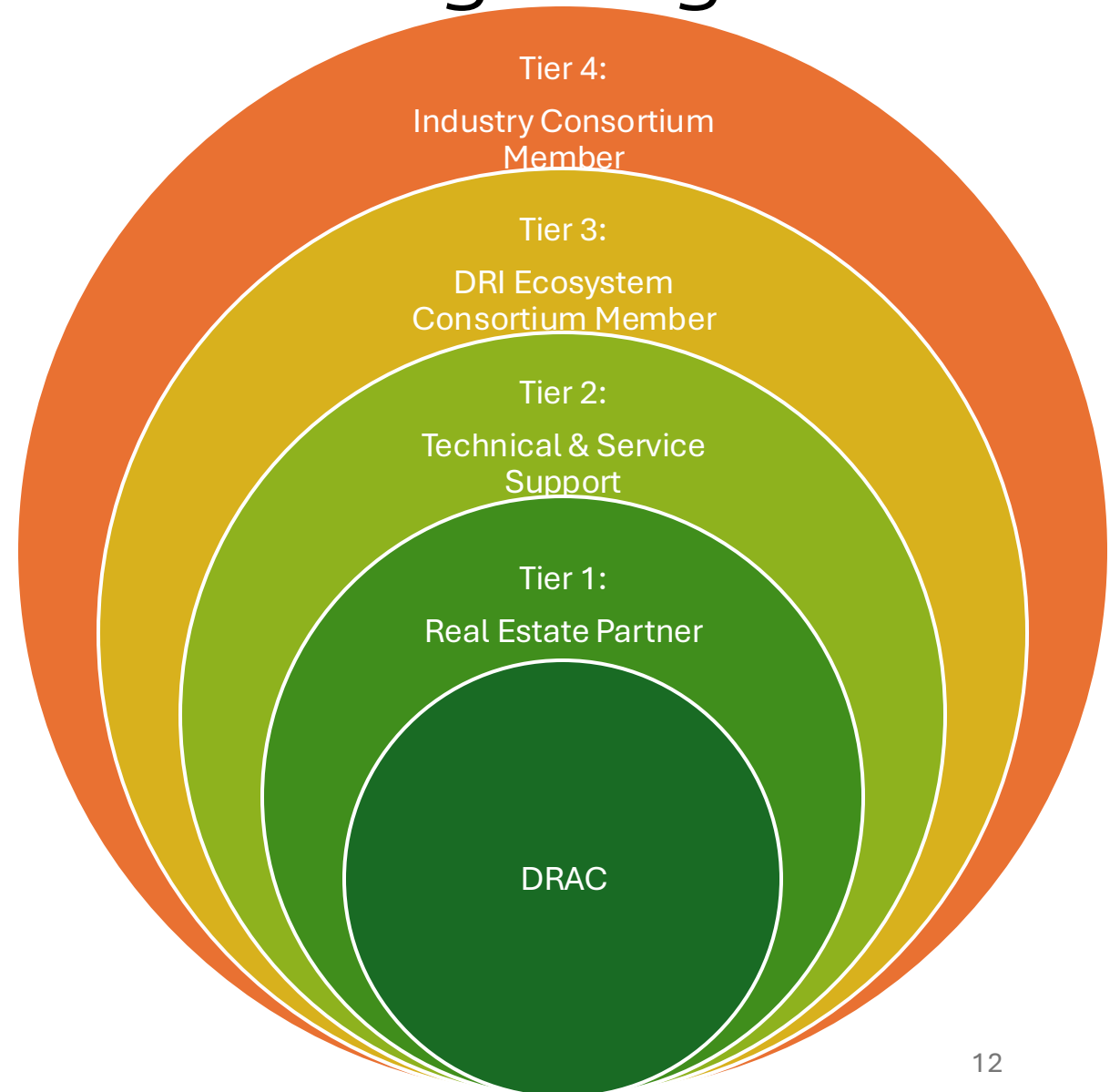


Initial due diligence



Sept./Oct.: Invitation to participate in Alliance Proposal

Consortium Members and Building a Big Tent



National Consultations & Workshops (To be finalized)

	Halifax, NS	Kingston, ON	Calgary, AB	Vancouver, BC	Toronto, ON	Montreal, QC
Dates	Aug. 18	Aug. 21	Sept. 16,17?	Sept. 18	TBD	Sept. 23-24
Regional Host	 		 	 	 	

National Partners

